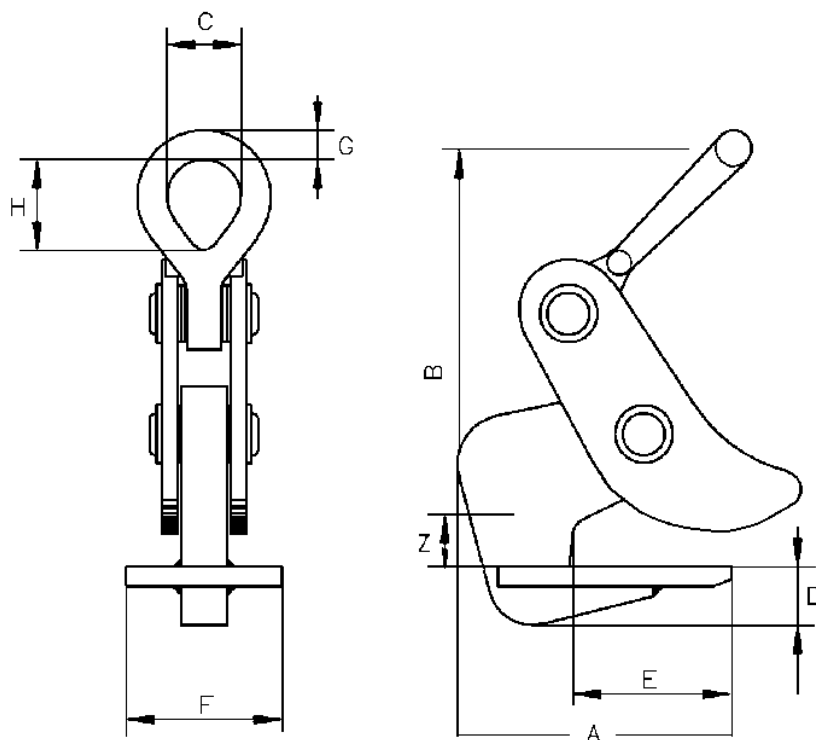


DESCRIPTION

The CH Series of plateclamps are sold in pairs and can be used with a 2 legs sling at 90° on all types of materials in plate form, providing that the plate can withstand the forces imposed onto it. The standard clamps are supplied with smooth jaw and are suitable for lifting one plate at a time, or bundles of plate providing the plates are of the same width, have straight square sides and are thicker than 10% of the maximum thickness.

DIAGRAM



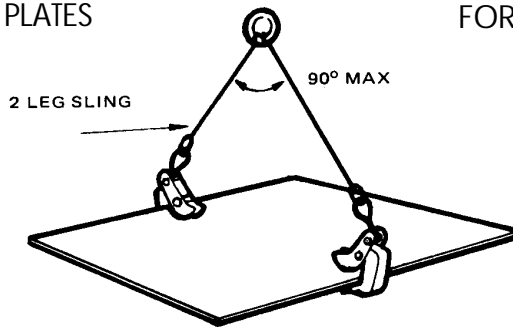
TABLE

MODEL	WLL	Plate mm Z	Weight kg	A	B	C	D	E	F	G	H
CH 1,0	1,0	5 - 32	8	142	200	50	30	82	100	10	73
CH 2,0	2,0	5 - 32	11	142	220	50	30	82	100	18	73
CH 2,0 / L	2,0	20 - 50	12	142	250	50	30	82	100	18	73
CH 4,0	4,0	5 - 50	17	192	288	64	40	112	100	25	92
CH 4,0 / L	4,0	50 - 100	23	192	338	64	40	112	100	25	92
CH 6,0	6,0	5 - 75	46	272	402	90	55	172	130	35	130
CH 6,0 / L	6,0	50 - 125	56	272	477	90	55	172	130	35	130
CH 8,0	8,0	5 - 75	53	273	428	90	55	168	130	35	130
CH 8,0 / L	8,0	50 - 125	60	273	503	90	55	168	130	35	130
HH 8,0	8,0	5 - 50	21	273	428	90	55	168	130	35	130
HH 8,0 / L	8,0	50 - 100	28	273	503	90	55	168	130	35	130
CH 10,0	10,0	5 - 100	95	334	515	114	65	214	150	35	114
CH 10,0 / L	10,0	50 - 150	108	334	600	114	65	214	150	35	114

RESTRICTIONS

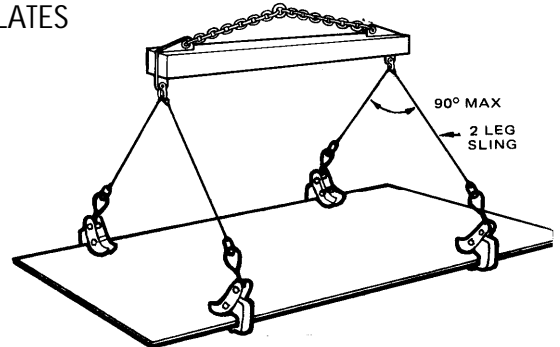
Included angle between chain and sling is not to exceed 90 degrees.

FOR SHORT PLATES



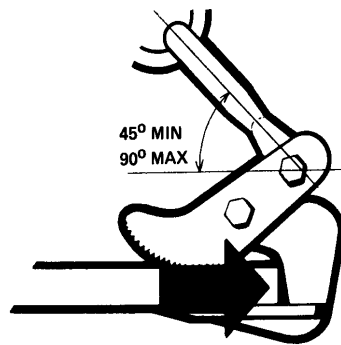
Use one pair of clamps for short plates

FOR LONG PLATES



Use a lifting beam or spreader beam for long plates. DO NOT use endless chain slings or 4 leg slings.

Check the plate is in contact with the back of the clamp. Bundles must be the same width and size.



OPTIONS

Standard CH plate clamps are supplied in pairs with smooth jaws, these can be replaced with jaws incorporating serrated hardened steel teeth. These clamps can be used with a 2 leg sling at 90° on all types of materials in plate form with a surface hardness of up to 300 Brinell providing that the plate can withstand the forces imposed on it. They're suitable for lifting only one plate at a time and various cap sizes are available by request.

