

Beam Clamp Powertex PBC-S1

Product information



POWERTEX

Powertex Beam Clamp PBC-S1 is durable and easy to install on different beam types. The beam clamp is designed to provide quick rigging and hoisting points for a great variety of applications.

Features:

- Safe - All Powertex Beam Clamps are proof load tested 2 x WLL
- Compact, lightweight construction
- Low headroom design
- Durable all steel construction with powder coated finish and black plated spindle and grip
- RFID equipped (chip) for easy service and inspection
- QR code for on-site access to Multilanguage user manuals
- Test certificate and Declaration of Conformity enclosed with each beam clamp
- Can be turned into Blackline version by adhering the included grey label over the shiny nameplate

Blackline products are suitable for use in theatres and the entertainment industry.

Note on entertainment & theatre applications: Powertex Beam Clamps are designed and certified according to industrial lifting standards (EN 13155)

For any application where loads are suspended above people (e.g., theatre, stage, rigging), please ensure that the complete installation meets the safety requirements of EN 17206

... [Read more](#)

Marking: According to standard, CE-marked, Powertex, Model, WLL, Serial number, QR code

Temperature range: -10°C up to +50°C.

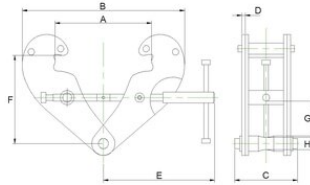
Finish: Black powder coating.

Standard: EN 13155, AS 4991

Safety factor: 5:1

Beam Clamp Powertex PBC-S1

Blueprint



Technical data

Part code	Code	WLL ton	Beam width mm	A max mm	B min mm	B max mm	C mm	D mm	E mm	H mm	F min mm	F max mm	G min mm	Weight kg
502300102400040	1t PBC	1	80-240	270	183	370	94	4	198	20	100	154	22	3.5
502300202400040	2t PBC	2	80-240	270	183	370	102	6	198	20	100	154	22	4.5
502300303300040	3t PBC	3	90-330	355	243	500	132	8	263	22	148	219	46	9.5
502300503300040	5t PBC	5	90-330	355	243	500	142	10	263	28	148	219	43	11
502301003500040	10t PBC	10	90-350	364	269	521	180	12	285	38	165	239	51	16