

## Vertical Plate Clamps 92 Series

---

### Product information



These clamps are primarily used for transporting sheet metal and steel plates in the vertical position, as well as lifting and rotating through 180°. They can also be used for transporting steel constructions and profiles. It is recommended to use a pair of plate clamps in conjunction with a spreader beam for long plate. Product function The jaw is opened and closed with the locking lever, except for the 92-500 which uses a positive spring-loaded cam. The safety lock spring loads the cam jaw, preventing the clamp from opening even when there is no load on the jaw. Workmanship & Parts These plate clamps are service-friendly, making it easy to exchange parts, which are readily available. Clamp repairs are available through the factory, or can be done by a competent person.

... [Read more](#)

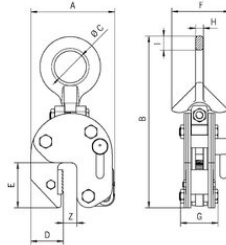
---

**Note:** Surface of the material being clamped must have a hardness level below HRC 30/Brinell 300.

**Warning:** Min . WLL is 10% of max . WLL

## Vertical Plate Clamps 92 Series

### Blueprint



### Technical data

Part code	WLL ton	Jaw width mm	A mm	B mm	C mm	D mm	E mm	F mm	G mm	H mm	I mm	Weight kg
502100050162770	0.5	0-16	99	195	29	33	47	50	48	11	15	1.5
502100150202770	1.5	0-20	126	225	50	49	70	82	55	13	20	3
502100200322770	2	0-32	192	312	80	75	96	100	81	20	24	8
502100300322770	3	0-32	192	320	80	75	96	100	81	30	30	12